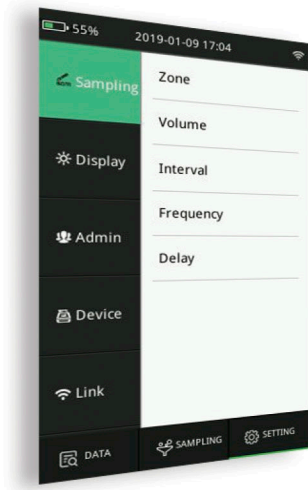


# BioAerosol Sampler | BAS

## Dual-Flow BioAerosol Sampler | DBAS



- Flow rate accuracy:  $\pm 2.5\%$  (100L/min) /  $\pm 3\%$  (200L/min)
- Long battery duration: At 100L/min  $\geq 10$  hours continuous sampling (60m<sup>3</sup>)  
At 200L/min  $\geq 4$  hours continuous sampling (48m<sup>3</sup>)
- Dual-purpose sampler for general sampling and remote sampling (support up to 8m sample tubing)
- Support various types of flowmeters for calibration, timesaving and low cost



## Setting Smart And Easy

Smart Settings mode

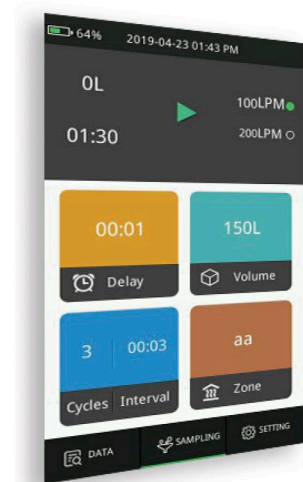
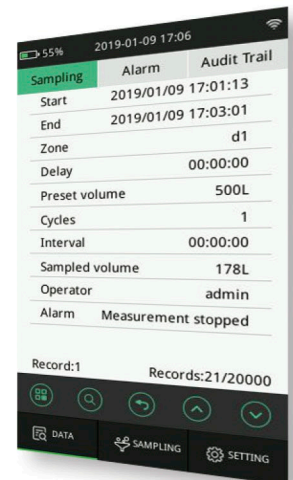
User-friendly input method

## Data Detailed And Flexible

Intuitive sampling records

Search function for quick search of records

One-click for exporting and printing

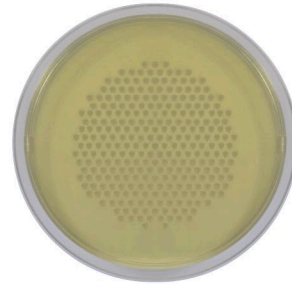


## Sampling Distinct And Direct

Intelligent sampling mode enables continuous and cyclic sampling

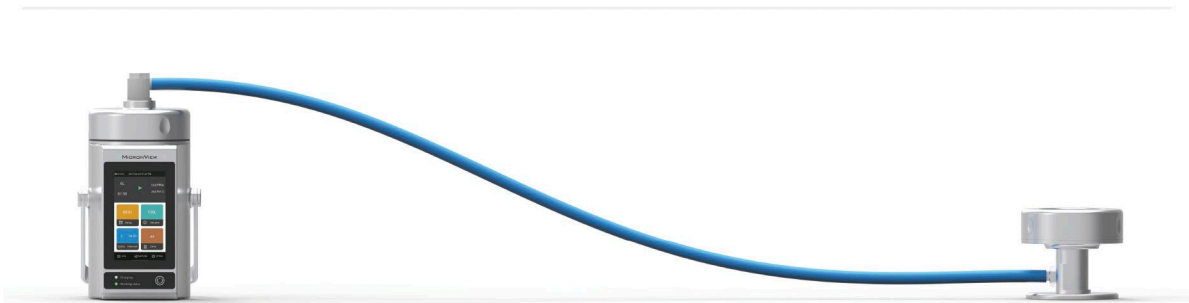
The sampling process is clear and distinct

LED lighting and beep prompt error



## Compact structure and high performance

- > Long battery duration: At 100L/min  $\geq$  10 hours continuous sampling (60m<sup>3</sup>)  
At 200L/min  $\geq$  4 hours continuous sampling (48m<sup>3</sup>)
- > A full charge only takes 3.5 hours
- > Easily discern and response rapidly on 4.3" capacitive touch screen
- > All components and circuit interfaces are isolated from external environment to prevent oxidant intrusion and cross contamination



Powerful and stabilized pump to support Remote/Isolator sampling (up to 8m)\*

\* The remote/ isolator sampling can only support the flow rate of 100L/min

## Specification sheet

Specification	BioAerosol Sampler   BAS	Dual-Flow BioAerosol Sampler   DBAS
Flow rate	100L/min ±2.5%	1. 100L/min ±2.5%; 2. 200L/min ±3%
Flow rate control	Built-in mass flow meter	
Zone	Over 20000 locations	
Sampling volumes	1-6000L, 6 default volumes	
Delay	0-59minutes59seconds	
Cycles	1-99 cycles	
Interval	0-59minutes59seconds	
Sampling head	Φ0.60 mm*280 holes , Anodized Aluminum	Φ0.85 mm*280 holes , Anodized Aluminum ( 316L stainless steel material available, customizable sampling head )
Isokinetic probe caliber	N/A	101.8mm
Weight / Dimensions	2.7Kg (6.0lbs); Φ110mm, H: 202mm (without foot mat)	
External surface	Anodized aluminium	
Power	24 V±10% AC adapter	
Battery	10.8V, 6800mAh rechargeable lithium battery For 100L/min mode,battery life over 10 hours; For 200L/min mode,battery life over 4 hours	
Application Extension	Connect with Airborne Particle Counter (APC) and BioAerosol Monitoring System (BAMS) to collect the contaminated samples in real time.	
Communication	USB、WIFI	
Data storage	20,000 sets of records storage	
Alarm	LED lighting and beep	
Display	4.3" capacitive touch screen	
Language	Chinese, English	
Calibration frequency	Annual calibration is recommended	
Operating conditions	Temperature: 5°C-30°C, relative humidity up to 80%	
Storage conditions	Temperature: 0°C-40°C, relative humidity up to 80%	
Safety	EN 61010-1:2010, EN 61326-1:2013, EN 61326-2-2:2013, EN 61000-6-1:2007, EN 61000-6-3:2007+A1	
Warranty	2 years after activation	

## Ordering Information

Name	Model	Order No.
BioAerosol Sampler   BAS	C110	MACHC110
BioAerosol Sampler (side handle)   BAS	C210	MACHC210
Dual-Flow BioAerosol Sampler   DBAS	C120	MACHC120

\*Note: Customizable sampling head; Sampling head material: Anodized aluminum, 316L stainless steel available

### Micron View Limited

Email: Sales@micronview.com <http://www.micronview.com>

© MICRONVIEW LIMITED . All rights reserved. Version:1.4

