



# Portable Microbial Air Sampler



**PHARMAGRAPH**  
Pharmaceutical Monitoring Systems

# Portable air sampling with next-generation data integrity

Expanding on our existing viable air sampling technology, the iVAS Roam delivers assured sampling performance that is EN 17141:2020 compliant. With an innovative design and user-friendly graphical interface, the iVAS Roam is a feature rich, intuitive portable air sampler.

Designed for use in cleanroom environments of all grades, the iVAS Roam offers the user a range of features and benefits that support a compliant environmental monitoring strategy.

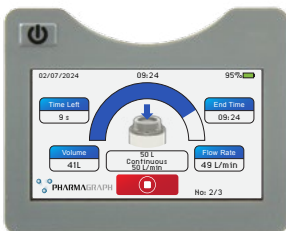


  
Traceability



- Two incorporated RFID readers capture operator ID and unit location in the sample record.
- Integral barcode scanner enables plate identification without user input. Creating important end-to-end data integrity.

  
User Friendly



- A lightweight, ergonomic design with an integrated handle.
- Features a retaining mechanism for the sieve head, enabling easy movement of the unit between sampling locations.
- Intuitive graphics are displayed on an angled 4.3-inch touch screen. Clearly displaying sample progress and completion.
- Adjustable plate height and size.



# Technical Specifications

<b>Sampling Flow Rate</b>	50 or 100lpm	<b>Program Features</b>	20 Programmable Sample Recipes 50 Programmable Users Programmable Start Delay Stores at least 2500 Records
<b>Exhaust Air</b>	HEPA filtered (>99.999% efficiency)	<b>Sampling Modes</b>	Continuous, Intermittent,
<b>Compatible Plate Size</b>	90mm plates, adjustable for fill depth	<b>Dimensions</b>	Sieve head diameter: 10.4 cm Whole unit: 26 x 20 x 14 cm
<b>Physical Efficiency (D50 Value)</b>	1.13 µm @ 100lpm 1.62 µm @ 50lpm	<b>Environmental</b>	Operating temperature 0 to 45°C Storage temperature -20 to 60°C Relative humidity: 5 – 95% (non-condensing) Altitude – below 5000m
<b>Unit Weight</b>	2.6 kg	<b>Connection Type</b>	USB-C for communication and charging Supplied with power supply for either EU, UK, US or CA plug as standard.
<b>Battery Specification/Life</b>	Internal 14.4V, 96 Wh Li-ion battery >8.5 hours sampling @ 100 lpm Charge time 4 hrs from 0% to 100%	<b>Cleaning Agent Compatibility</b>	IPA, QUATS, 3% H <sub>2</sub> O <sub>2</sub>
<b>User Tracking</b>	PIN or RFID Tag (RFID Tracking model only)	<b>Materials of Construction</b>	Body – ABS Sieve Head – 316L Stainless Steel
<b>Location Tracking</b>	Manual Entry or RFID Tag (RFID Tracking model only)		
<b>Plate Tracking</b>	Barcode Scanner		
<b>User Interface</b>	4.3" angled colour touchscreen		



**Sample Tour Functionality**



- Innovative Tour Configurator feature that enables users to predefine sample locations in a tour pattern.
- Simplifies the setup of complex sampling routes, whilst guaranteeing that every critical area is monitored systematically.
- Enhances the thoroughness and reliability of environmental data collection.



**Compliance**



- Directly supports compliance with industry regulations
- The 316 stainless steel sieve head maximises physical and biological efficiency. Giving a d50 value of 1.13µm @ 100 litres per minute, meeting with all relevant regulatory requirements including EU-GMP Annex 1.
- iVAS Roam Manager App offers a range of features that support compliance – see overleaf.

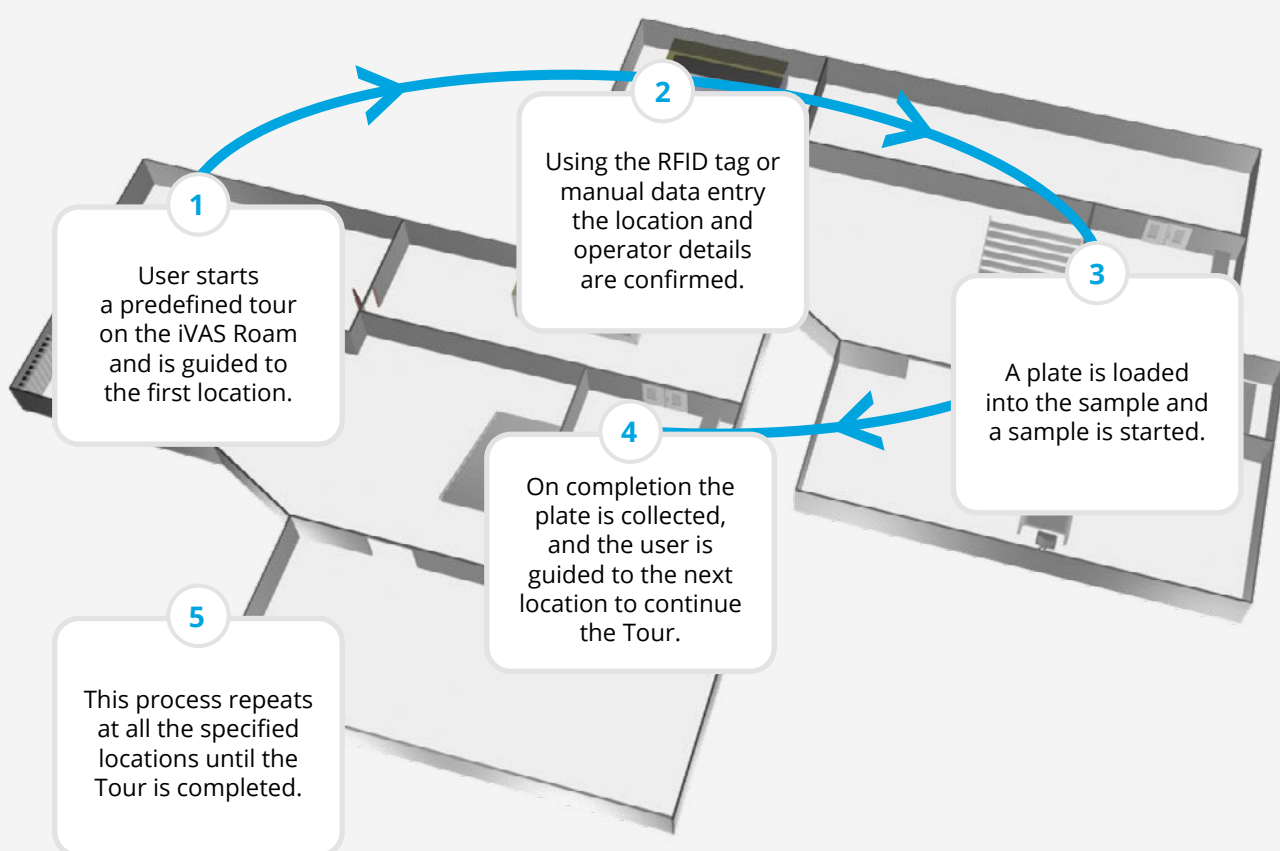


## Tour Configurator Explained



The iVAS Roam introduces an innovative Tour Configurator feature designed to enhance the precision and efficiency of environmental monitoring. This allows users to create and save a defined route around a facility – namely a Tour.

A Tour is created by specifying the sampling locations and order in which they will be sampled, this information is saved to the iVAS Roam with a unique identifier. This then guides the user to each location in sequence as follows:



Each Tour is easily configured via the Manager App using an intuitive user interface, which supports the ordering and dragging of locations to craft the exact sequence desired for the sampling process. Tours are then saved directly to the unit, ensuring a seamless transition from planning to execution. Multiple Tours can be configured and saved to the same iVAS Roam; these can also be duplicated to other units.

This capability not only simplifies the setup of complex sampling routes but also guarantees that every critical area is monitored systematically, enhancing the thoroughness and reliability of environmental data collection.

# iVAS Roam Manager App

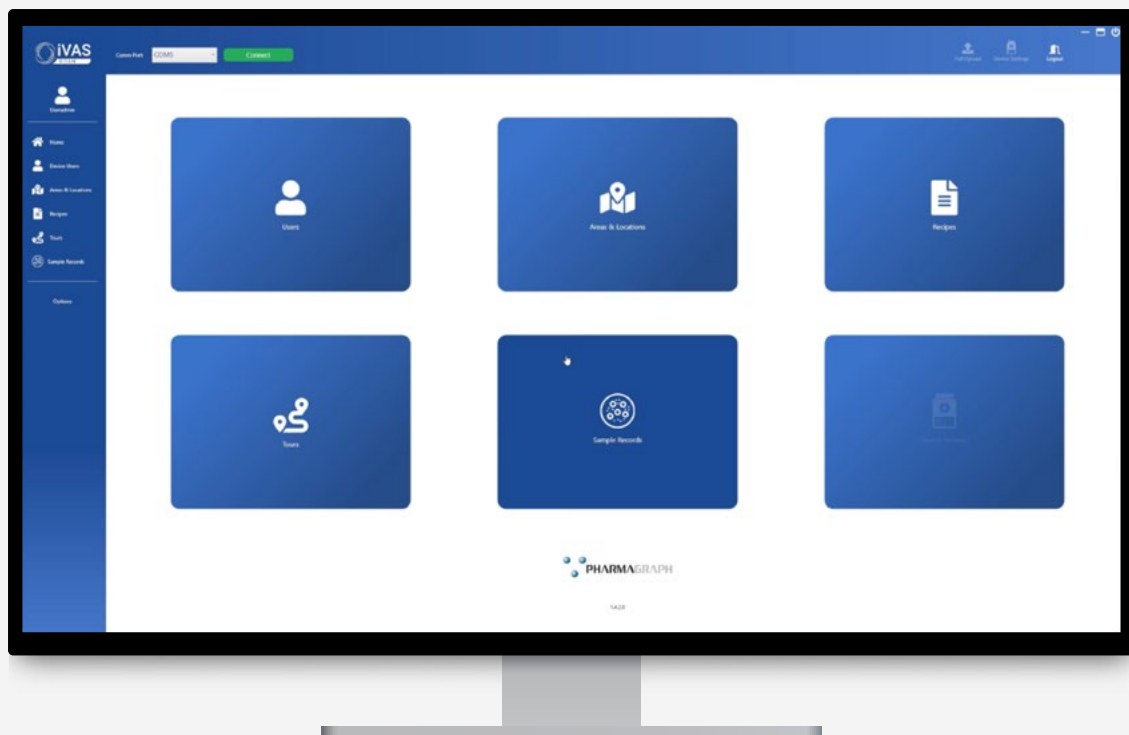
The iVAS Roam can either integrate directly with Pharmagraph's enVigil FMS software or operate as a standalone unit, managing set up and sampling records with the companion iVAS Roam Manager App.



- Ability to deploy a single site configuration to multiple units.
- Comprehensive audit trail offers a detailed record of all changes made within the application, providing traceability that is essential for compliance with regulatory standards, including 21 CFR Part 11.
- Real-time data synchronization maintains an up-to-date database, vital for real-time compliance monitoring and reporting.
- Advanced reporting and visualisation generate detailed reports in multiple formats that are easy to interpret and analyse.

The iVAS Roam Manager App is designed for a wide range of users in cleanroom and laboratory settings, from technical experts to personnel with minimal technical background.

It provides an intuitive, user-friendly platform that not only streamlines environmental monitoring tasks but also ensures that operations remain in strict compliance with regulatory standards.



## Quality and Compliance at Pharmagraph

Pharmagraph aims to deliver products and services that meet or exceed our customers' expectations, and that comply with all statutory and regulatory requirements for the industry. Our aim is to provide the customer with goods and services to the agreed requirement in accordance with the scope and price.

Pharmagraph are committed to achieving and maintaining Quality and Compliance.

Our Quality Management System is certified as meeting the requirements of ISO 9001:2015 and we can offer ISO 17025:2017 accredited calibrations. Giving our customers confidence in the high quality of products and services we provide.



FS 621150



FS 621150



24752



## Accreditation

Our attainment of the following accreditation demonstrates our commitment to work to the highest industry standards, as well as our dedication to continuous improvement.

- ISO 9001:2015
- ISO 17025:2017
- Cyber Essentials
- Safe Contractor
- Constructionline
- JOSCAR Registered



Tel: +44 (0) 1252 861700



sales@pharmagraph.co.uk



www.pharmagraph.co.uk



Scientific & Environmental Monitoring Technologies

Melbourne Office

Email: sales@alphascientific.com.au  
Website: www.alphascientific.com.au

Phone: (03) 9124 9886

